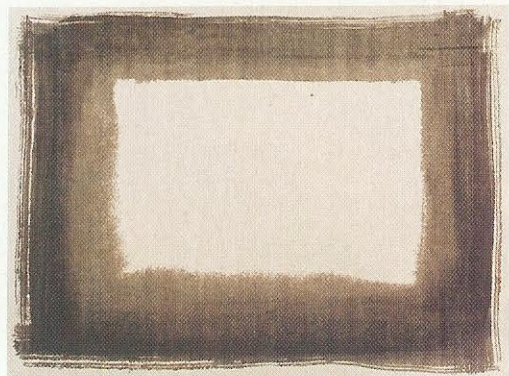
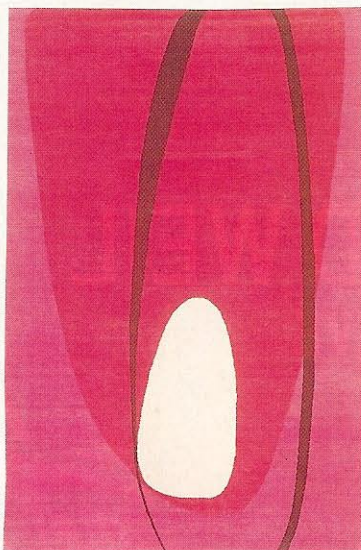


# rug rage domestic bliss

A rug can be a quiet backdrop or the focal point of a room. Here, our picks of the newest designs



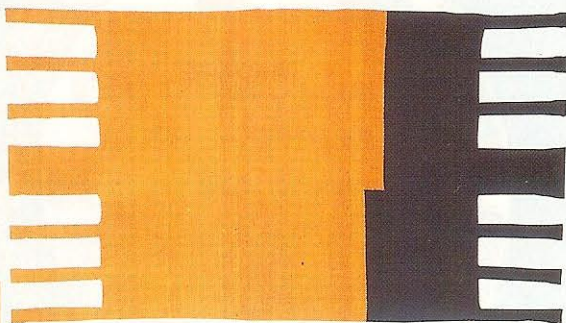
**Borderline Abstraction** Brad Davis and Janis Provisor update the traditional bordered rug with a painterly aesthetic. Border Grey, \$150 per sq. ft., in 100 percent wild silk. Fort Street Studio, NYC. 212-925-5383.



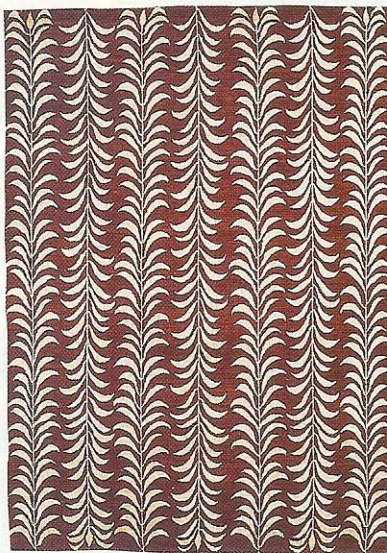
**Artful Design** Artist Rex Ray derives his unusual rug designs from his collages. Focus, from \$70 per sq. ft. Through Elson & Co. 800-944-2858. elsoncompany.com.



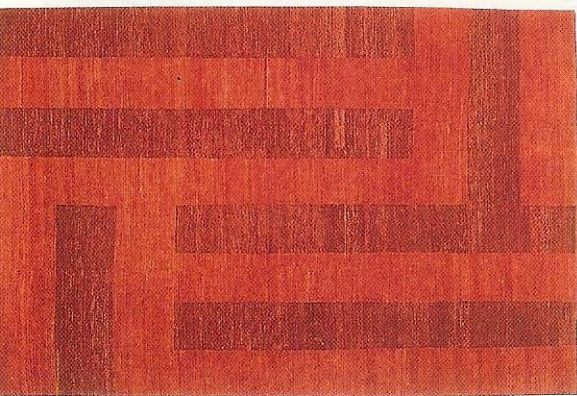
**Coastal Color** With its aqua ground and punchy border, Collins is part of Odegard's Miami Collection and a harbinger of the company's soon-to-open showroom in the Miami Design District. \$107 per sq. ft.



**Fringe Benefits** The quirky, exaggerated fringe on Alberto Casari's reversible Malagua rug in Ocre and Prussian Blue creates a funky look. \$2,000. For information: pppdesign@terra.com.pe.



**Divine Inspiration** Choose Suzanne Sharp's Moses, with its stylized vine motif, to perk up a traditional scheme. In brown, 9 by 6 feet, \$4,275. The Rug Company, NYC. 212-274-0444.



**Bold Graphics** As its name connotes, Michaelian & Kohlberg's Balance, from the Paracas Collection, has a strong but not overwhelming presence. In red and brown, \$75 per sq. ft.

## signature style

Long known for antique rugs, Doris Leslie Blau launches a new line

A roster of A-list design talents created Doris Leslie Blau's Designer's Collection. A few of our favorites: **1** Eve Robinson's tonal, concentric squares with mitered corners; 10 by 10 feet, \$8,000. **2** Sheila Bridges's optical design in wool and silk; 6 by 9 feet, \$6,480. **3** Roderick N. Shade's graphic pattern derived from an African Kuba cloth; 5 by 8 feet, \$3,200. All through Doris Leslie Blau, NYC, 212-752-0222, and Stark Carpet.

