

AWARD-WINNING DESIGNER

SHEILA BRIDGES

SHOPS FOR FABULOUS FINDS AT 200 LEX

N

amed "America's Best Interior Designer" by CNN and *Time Magazine*, Sheila Bridges founded her own interior design firm in 1994.

Bridges has designed residences and offices for entertainers, entrepreneurs, and business professionals, including the 8,300-square-foot Harlem offices for former President Bill Clinton, and projects at Columbia University and Princeton University.

In 1996, Bridges' passion for interiors inspired her to design furniture and home furnishings under the name Sheila Bridges Home, Inc. and is honored to have her Harlem Toile De Jouy wallpaper represented in the Smithsonian Cooper-Hewitt National Design Museum's permanent wallpaper collection. Her designs have been showcased in many exhibits and museums throughout the country and Europe.

Originally from Philadelphia, Bridges moved to New York City in 1986, and lives in Harlem. She holds degrees from Brown University and Parsons School of Design, and studied decorative arts at Polimoda in Florence, Italy. Bridges is also the author of two books: *Furnishing Forward: A Practical Guide to Furnishing for a Lifetime*, which was released in 2002 and *The Bald Mermaid, A Memoir*, published in 2013.



FLOOR

1



Circa Lighting

The Osiris Reflector Chandelier by Thomas O'Brien, shown here in Bronze and Hand-Rubbed Antique Brass with Linen Diffuser is available at **Circa Lighting, Suite 103, 212-725-2500, circalighting.com**

FLOOR

6

Julian Chichester

The arms of the Lauren Chair are saddle-stitched in black pebble-grained leather and the low frame is standard in distressed dark red leather. The seat is available in COM, or our selection of linen and velvet. Available at **Julian Chichester, Suite 604, 646-293-6622, us.julianchichester.com**



FLOOR

8



Lorin Marsh

Open pore flor morado with an inset blotchy bronze mirror top. The Speck Side table is also available in textured, burnished metal finishes. Available from **Lorin Marsh, Suite 809, 212-759-8700, lorinmarsh.com**

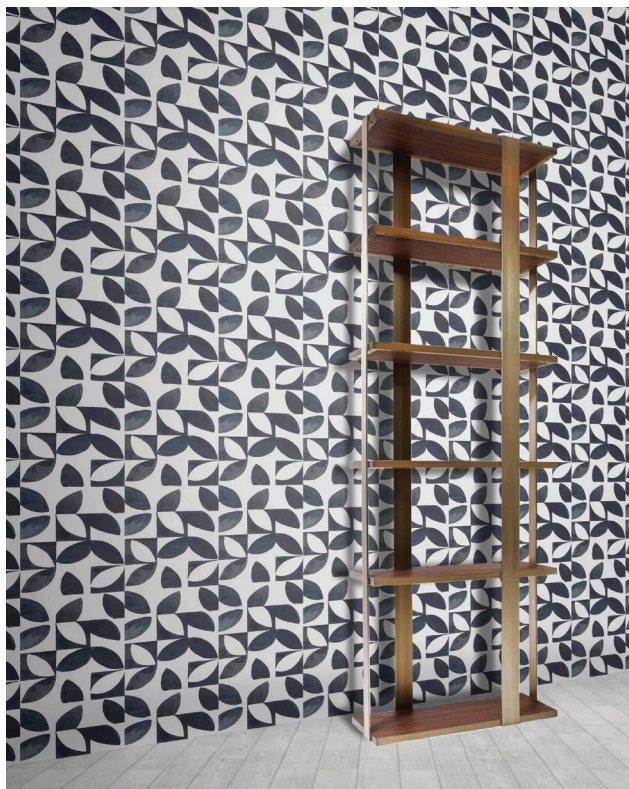
FLOOR

12



SA Baxter Architectural Hardware

The Looking Glass Collection is from a new design collaboration with Workshop/APD, inspired by bisected geode crystals. Available from **SA Baxter Architectural Hardware**, Suite 1205, 212-203-4382, sabaxter.com



Profiles

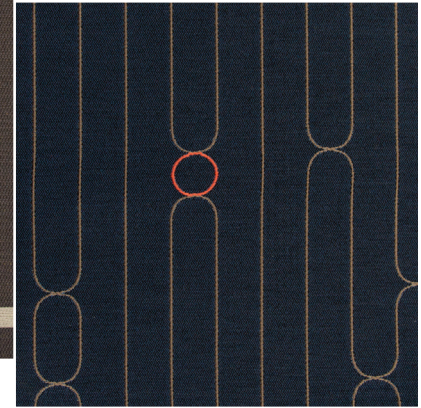
The digital print, Leaves wallpaper by Brett Design, available from **Profiles**, Suite 1211, 212-689-6903, profilesny.net

FLOOR

14



Endless in Road



Loop in Bracket

Luna Textiles

Endless, shown here in Road, is composed of 84% cotton and 16% nylon; Loop, shown here in Bracket, is 100% pre-consumer, solution dyed recycled nylon. Both upholstery fabrics are Greenguard and Greenguard Gold certified, and made in the USA. Available from **Luna Textiles, Suite 1410, 212-251-0132, lunatextiles.com**

FLOOR

16



FAIR

Designed by Poul Volther in 1952 and manufactured by Klassik Studio, the PV Lounge chair is shown here in solid oak and leather. It's also available in soaped oak and natural leather, black stained and black leather, and smoked oak and black leather. Available at **FAIR, Suite 1600, 212-352-9615, fair-design.com**