

AD Pro

# From Studio McGee, Ozwald Boateng, and More: 9 Design Collabs We're Loving Right Now

A look at the latest drops in furniture, textiles, and more

By Alia Akkam

September 27, 2023

If the market's latest debuts have any lesson to tell, it's that the design community indeed works better together. From [Studio McGee's](#) regal kitchen and bath fixtures for Kohler to Ozwald Boateng's African-motif-emblazoned furniture for Poltrona Frau, industry brands across categories are coming together to bring thoughtful new offerings to designers' tool kits.

Looking for the latest in furniture, decor, lighting, and beyond? Meet the industry's latest dynamic duos.





Ozwald Boateng perches on the Chester armchair, upholstered in the collection's embossed leather. Photography courtesy Poltrona Frau

## Ozwald Boateng x Poltrona Frau

---

Become an AD PRO member for only  
**\$25 \$20 per month.**

[Join Now](#)

---

When British Ghanaian fashion designer Ozwald Boateng opened his first retail shop on Savile Row in 1995—at 28, he was the youngest tailor to boast such a coveted storefront—he made waves in the world of bespoke menswear with his refined cuts and bold splashes of

color. For the first time, Boateng is translating that combination of precision and edginess to furniture and accessories with his Culture & Craft collection for Poltrona Frau.

Just unveiled at London Design Festival and making its US debut at [Design Miami](#) in December, it is distinguished by Boateng's celebrated Tribal print, which reimagines the traditional Kente cloths that speak to his Ghanaian heritage. On Poltrona Frau's Chester sofa, for example, Tribal is applied to leather using a hot embossing technique, while it's digitally printed onto the velvety fabric swathing the curved Vanity Fair armchair. Boateng also bolsters Poltrona Frau's Beautilities range with a wool rug, cushions, wallpaper, scented candles, and a mancala board game. Typically played in Africa with seeds, this version melds dark wood and Murano glass.



Alessio DAniello  
**Vanity Fair armchair in the collection's Tribal velvet**



Alessio DAniello  
**Chester armchair upholstered in Boateng's embossed leather**



Mark Cocksedge  
**Mancala board game**



[Shop the Collection](#)







Glenn Sestig and Lison de Caunes Photography courtesy Invisible Collection

## Glenn Sestig x Lison de Caunes for Invisible Collection

From her atelier in Paris, [Lison de Caunes](#) enlivens antiques and dreams up originals with her lauded straw marquetry techniques. Consider Beausoleil. The collection of tables and stools she crafted with Belgian architect Glenn Sestig for Invisible Collection made a splash at Paris Design Week with its minimalist lines—a Sestig signature—and intricate straw inlay patterns depicting sunbeams that play with light against the sleek black-, bronze-, chocolate-, and prune-tinted wood.



The collaboration debuted at Paris Design Week earlier this month.

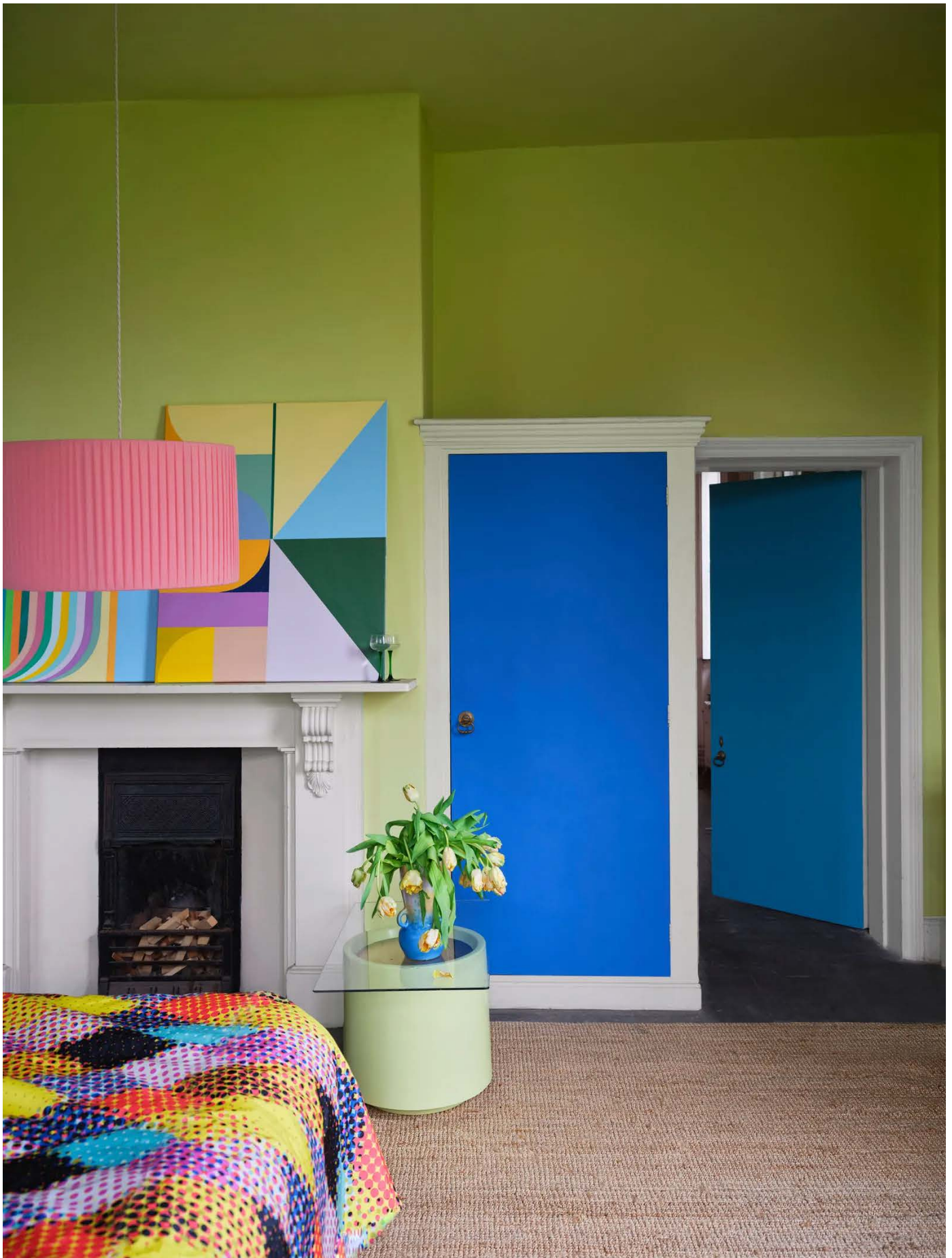


Beausoleil side table small and Beausoleil side table large



[Shop the Collection](#)





Hug Plum walls paired with Pea Flower Tea-coated doors. Photo: James Merrell/Farrow & Ball.

# Christopher John Rogers x Farrow & Ball

Fashion designer [Christopher John Rogers](#) has dressed everyone from Michelle Obama to Rihanna in his exuberant, vividly-hued clothing, and Carte Blanche, Rogers’s capsule collection for Farrow & Ball, further explores his fervor for color. For more than 18 months, Rogers worked hand in hand with Charlotte Cosby, the heritage brand’s creative director, to develop a mix of 12 neutral and brazen shades that evoke culinary memories from his native Baton Rouge, Louisiana, like the soft white Au Lait, silvery blue Sardine, and verdant green Tomatillo. A trifecta of graphic wallpaper patterns incorporating the Carte Blanche palette—a wide stripe, a check that pays tribute to Anni Albers, and Rogers’s own dot motif—is a welcome bonus.



Photo: Courtesy of Farrow & Ball.

Christopher John Rogers and Charlotte Cosby



Photo: James Merrell/Farrow & Ball.

Check wallpaper trimmed with Shallot paint



James Merrell

Carte Blanche's Dot wallpaper

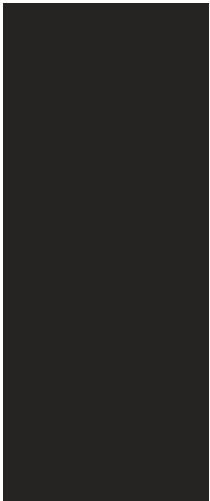


Photo: James Merrell/Farrow & Ball.

Romesco rug accented architectural coated in Shallot



Shop the Collection



In a bathroom, Shea McGee pairs the Malin vanity with the Castia bathroom sink faucet, Kernensconce, and other collection fixtures. Photography courtesy Kohler

## Studio McGee x Kohler

Shea McGee, the cofounder and chief creative officer of Draper, Utah-based design practice Studio McGee, has become a living room fixture thanks TV appearances on Netflix's *Dream Home Makeover* and, as of May, a *Sessions by MasterClass* series letting fans in on her design process. This month McGee sets her sights on the kitchen and bath with six new collections with Kohler that pull from the kitchen and bath behemoth's archives. Along with versatile faucets, showerheads, and trims in Edalyn and Castia, look out for the Shaker-style vanities adorned with mushroom knobs in Malin, or Seagrove's tapered-leg renditions that call to mind midcentury modernism. Embra and Kernensconce put the spotlight on pendants and sconces flaunting reeded and screw details and vintage-looking milk glass, respectively.





Edalyn Bridge kitchen faucet



Castia bathroom faucet



Kernen pendant light



M



Shop the Collection

---



The Harlem Toile de Jouy collection, spanning Dutch ovens, pitchers, and mugs. Photography courtesy Le Creuset

## Sheila Bridges x Le Creuset

AD100 designer [Sheila Bridges](#) has called Harlem home since the 1990s, and the historically rich neighborhood has spawned [Harlem Toile du Jouy](#), her take on [French toile](#) that lampoons the stereotypes deeply embedded in Black culture. These joyful vignettes—a trio of carefree young girls jumping rope, a man and woman dancing in front of the Arc de Triomphe, an unconventional basketball game amid the trees—have now been brought to life on Le Creuset enameled cast-iron Dutch ovens and stoneware pitchers and mugs in a dramatic black appliqué juxtaposed with a warm white background.

